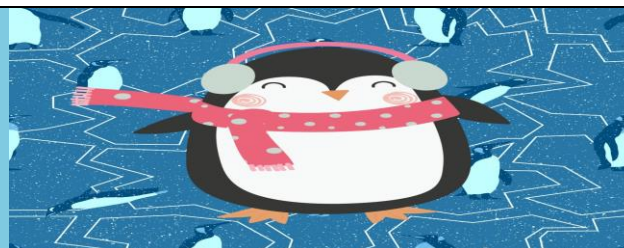


# JANUARY



MONDAY	TUESDAY	WEDNESDAY	THURSDAY	FRIDAY
<b>2</b>	<b>3</b>	<b>4</b>	<b>5</b>	<b>6</b>
<i>NO SCHOOL</i>	<i>NO SCHOOL</i>	MINI CINNI RAISINS JUICE/MILK	SAUSAGE BISCUIT APPLESAUCE JUICE/MILK	CEREAL TOAST W/JELLY DICED PEACHES JUICE/MILK
<b>9</b>	<b>10</b>	<b>11</b>	<b>12</b>	<b>13</b>
WG DONUT STICK MIXED FRUIT JUICE/MILK	EGG PATTY / BACON TOAST W/JELLY APPLESAUCE JUICE/MILK	FRENCH TOAST W/SYRUP DICED PEACHES JUICE/MILK	OATMEAL CINNAMON TOAST MIXED FRUIT JUICE/MILK	BREAKFAST PIZZA CEREAL DICED PEARS JUICE/MILK
<b>16</b>	<b>17</b>	<b>18</b>	<b>19</b>	<b>20</b>
<i>NO SCHOOL</i> <i>*MAKE UP DAY</i>	CINNAMON TOAST DANISH RAISINS JUICE/MILK	SCRAMBLED EGGS HAM / TOAST W/JELLY MIXED FRUIT JUICE/MILK	DUTCH WAFFLE APPLESAUCE JUICE/MILK	PANCAKE WRAP DICED PEACHES JUICE/MILK
<b>23</b>	<b>24</b>	<b>25</b>	<b>26</b>	<b>27</b>
APPLE FRUDEL RAISINS JUICE/MILK	BLUEBERRY MUFFIN CHEESESTICK APPLESAUCE JUICE/MILK	WG HONEY BUN DICED PEACHES JUICE/MILK	PANCAKES DICED PEARS JUICE/MILK	WG DONUT FRUIT SALAD JUICE/MILK
<b>30</b>	<b>31</b>			
TIGER BITES YOGURT DICED PEACHES JUICE/MILK	BISCUIT & GRAVY SAUSAGE APPLESAUCE JUICE/MILK			

\*\* MENUS ARE SUBJECT TO CHANGE DUE TO AVAILABILITY AND/OR WEATHER

THIS INSTITUTION IS AN EQUAL OPPORTUNITY PROVIDER AND EMPLOYER.